



Le Clos des Biolles



h0 Vo) - #\ UU -k#@00° u@ V'hh-
du 23.01.2023

Un projet de la société

Urba Immo SA

contact@closdesbiolles.ch

art  g  tech

artgtech sa architectes
blvd de grancy 49
ch-1006 lausanne



PLAN DE SITUATION

60.20 Clos des Biolles_Romanel-sur-Lausanne



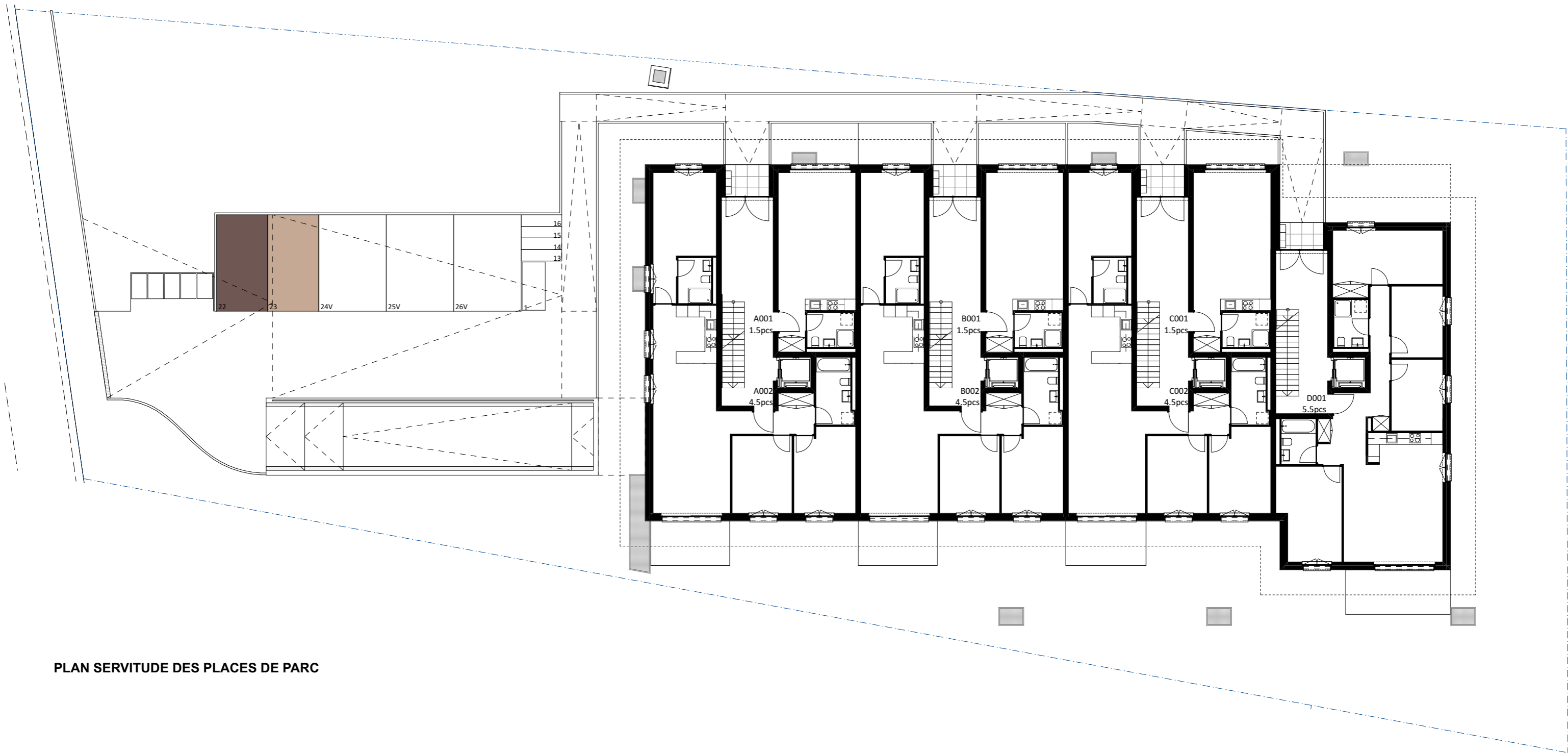
PLAN SERVITUDE DES PLACES DE PARC

60.20 Clos des Biolles_Romanel-sur-Lausanne



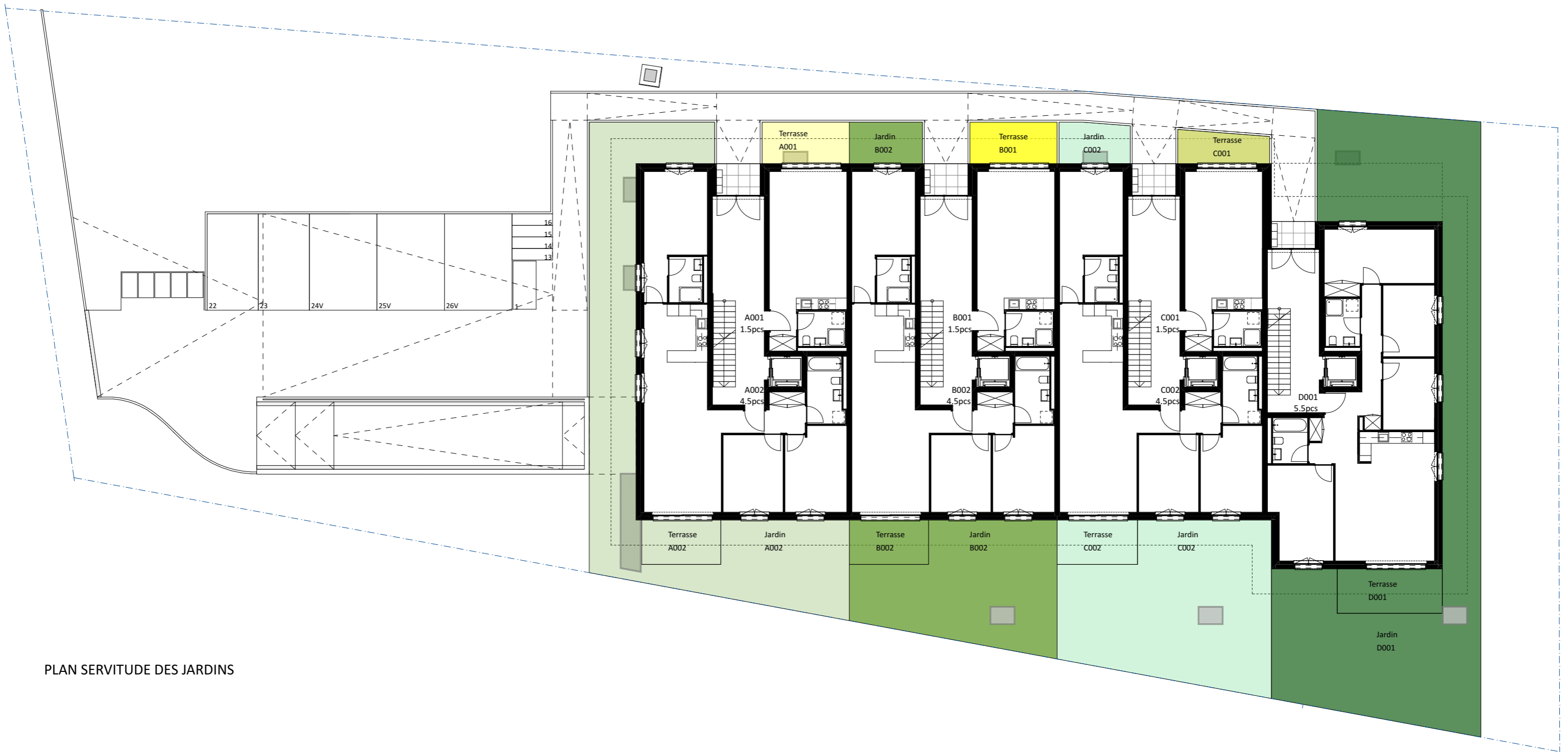
PLAN SERVITUDE DES CAVES

60.20 Clos des Biolles_Romanel-sur-Lausanne



PLAN SERVITUDE DES PLACES DE PARC

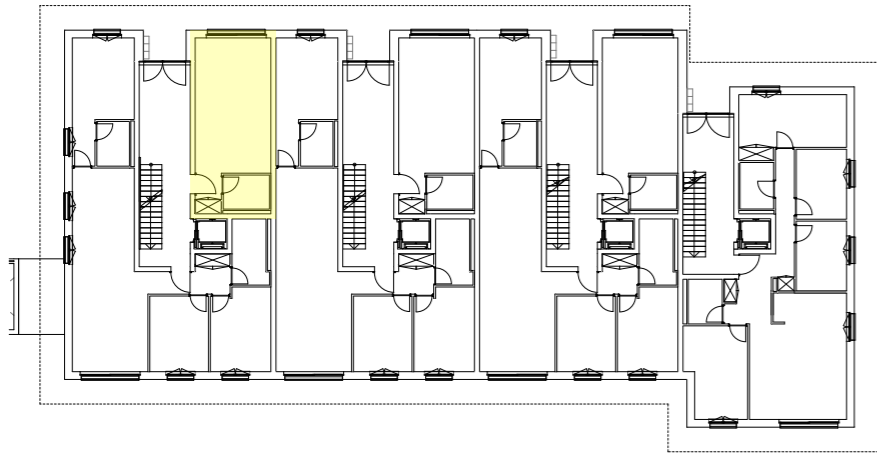
60.20 Clos des Biolles_Romanel-sur-Lausanne – Plans PPE et servitudes



PLAN SERVITUDE DES JARDINS

60.20 Clos des Biolles_Romanel-sur-Lausanne





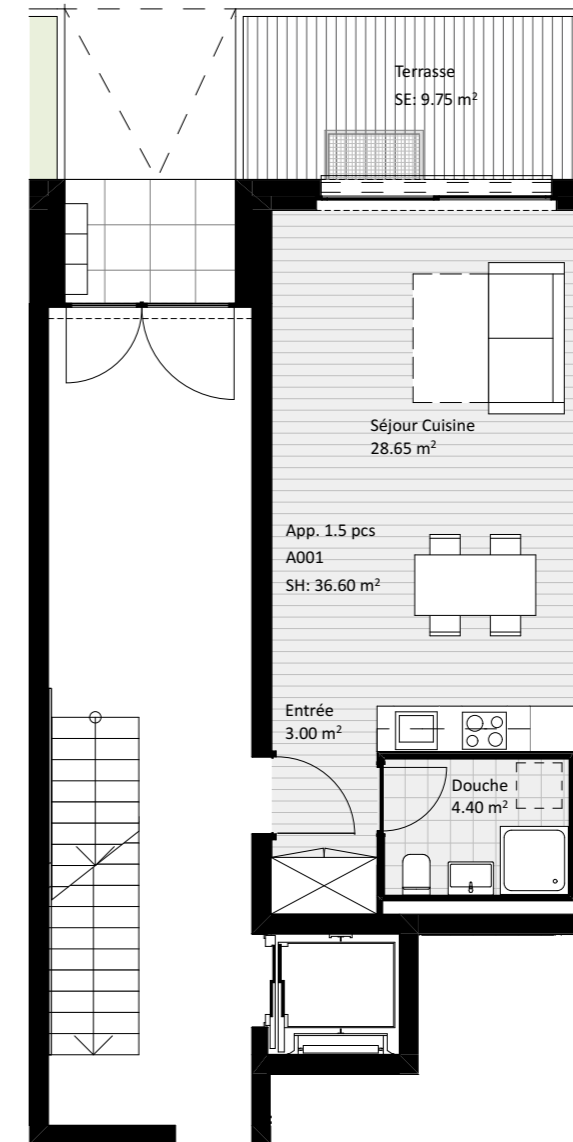
Rez-de-chaussée

1:400




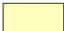


Façade Est

1:400



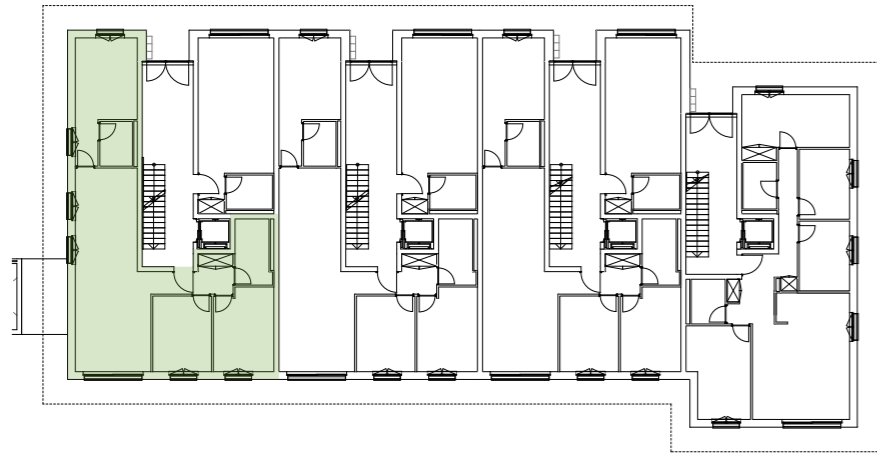
A001 - 1.5 pièces

	Surface totale de vente	41.5 m ²
	Surface habitable	36.6 m ²
	Surface balcon / terrasse	9.75 m ²
	Surface jardin	
	Surface cave	4.0 m ²

Pour les pièces dont le plafond suit la pente de la toiture, la surface habitable est comptée en plein à partir de 1.30 mètres selon la législation vaudoise.

60.20 Clos des Biolles_Romanel-sur-Lausanne





Rez-de-chaussée





1:400



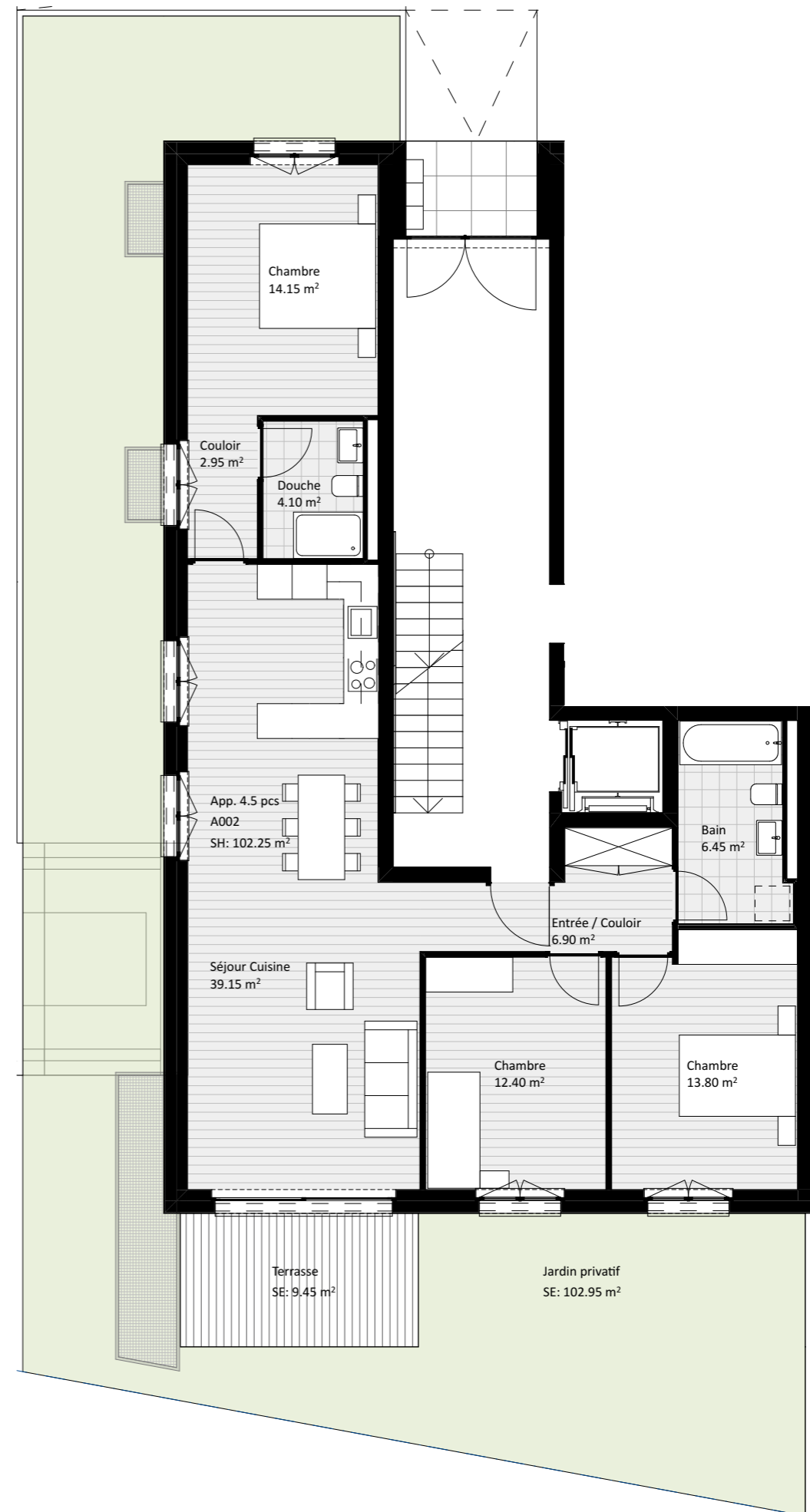
Façade Nord

1:400

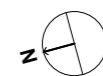
A002 - 4.5 pièces

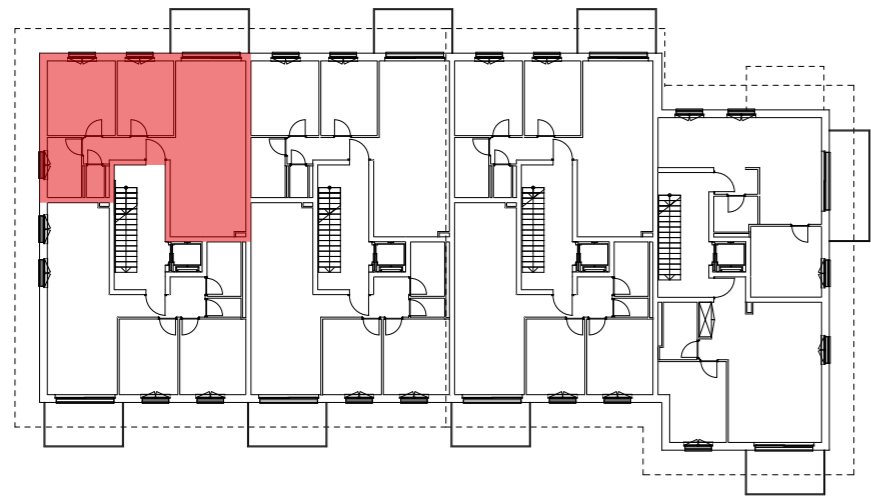
	Surface totale de vente	141.3 m ²
	Surface habitable	102.25 m ²
	Surface balcon / terrasse	9.45 m ²
	Surface jardin	102.95 m ²
	Surface cave	9.5 m ²

Pour les pièces dont le plafond suit la pente de la toiture, la surface habitable est comptée en plein à partir de 1.30 mètres selon la législation vaudoise.



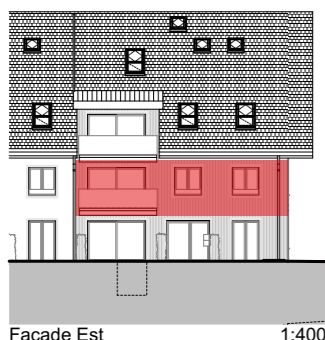
60.20 Clos des Biolles_Romanel-sur-Lausanne





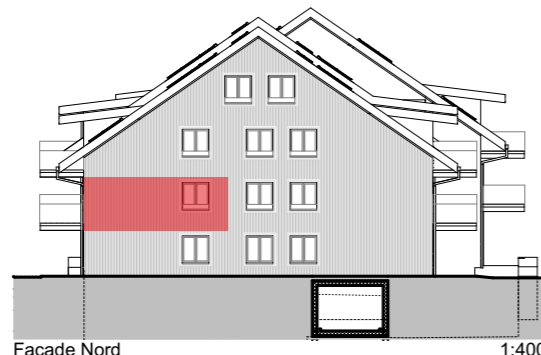
1er Etage

1:400



Façade Est

1:400



Façade Nord

1:400

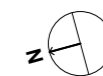


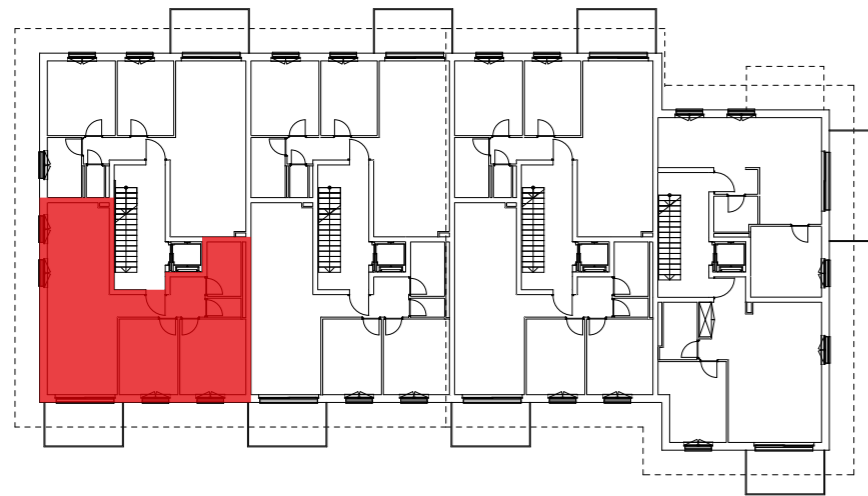
A101 - 3.5 pièces

Surface totale de vente	81.7 m ²
Surface habitable	76.75 m ²
Surface balcon / terrasse	9.85 m ²
Surface jardin	
Surface cave	6.5 m ²

Pour les pièces dont le plafond suit la pente de la toiture, la surface habitable est comptée en plein à partir de 1.30 mètres selon la législation vaudoise.

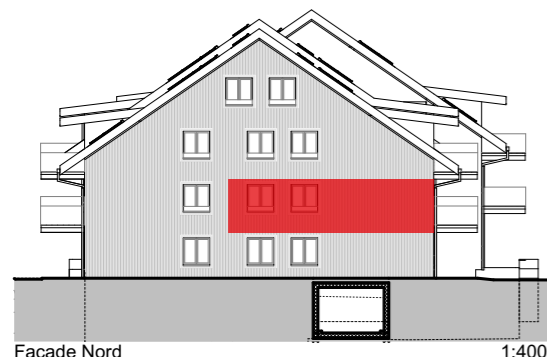
60.20 Clos des Biolles_Romanel-sur-Lausanne





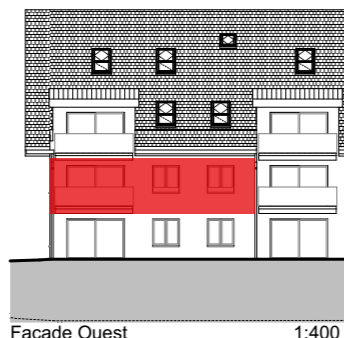
1er Etage

1:400



Façade Nord

1:400







Façade Ouest

1:400



A102 - 3.5 pièces

	Surface totale de vente	82.85 m ²
	Surface habitable	77.9 m ²
	Surface balcon / terrasse	9.85 m ²
	Surface jardin	
	Surface cave	5.5 m ²

Pour les pièces dont le plafond suit la pente de la toiture, la surface habitable est comptée en plein à partir de 1.30 mètres selon la législation vaudoise.

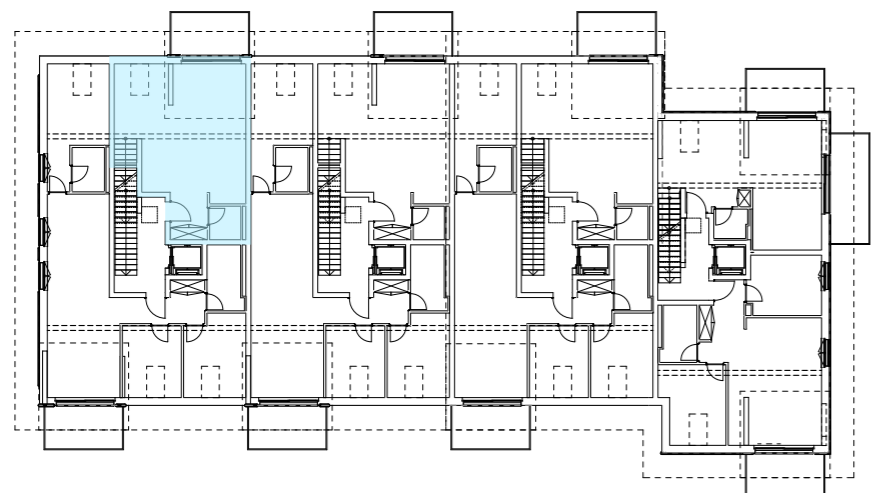
60.20 Clos des Biolles_Romanel-sur-Lausanne





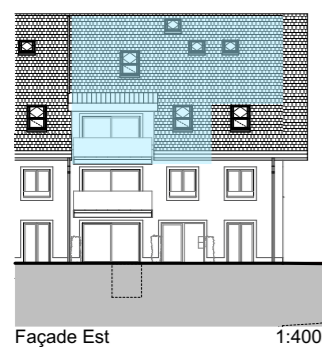
Combles

1:400



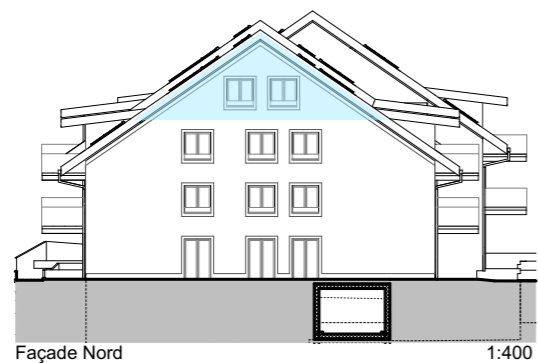
2ème Etage

1:400



Façade Est





1:400



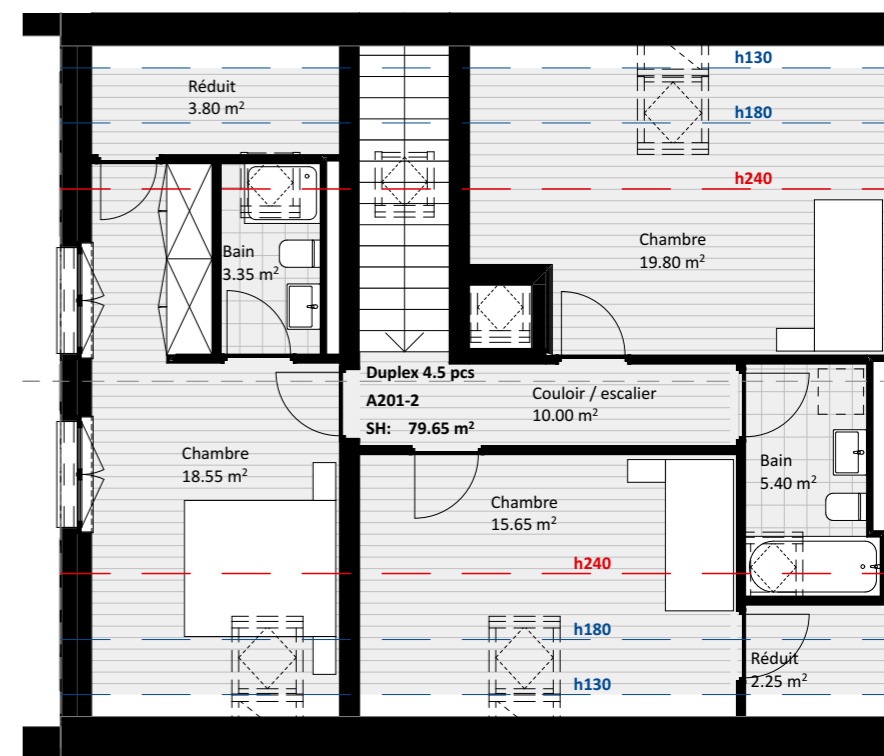
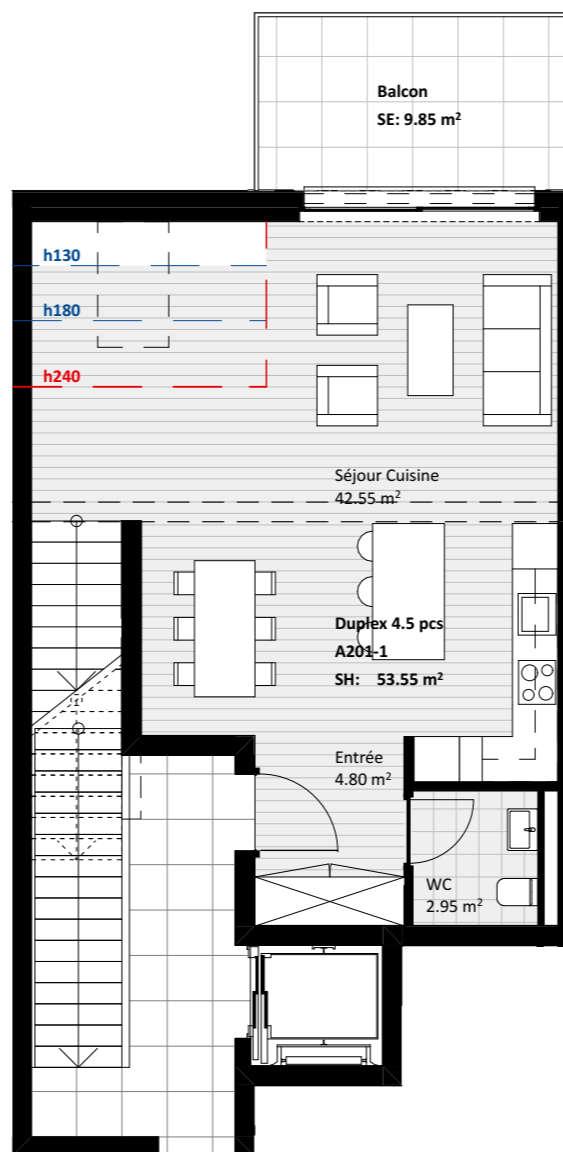
Façade Nord

1:400

A201 - Duplex 4.5 pièces

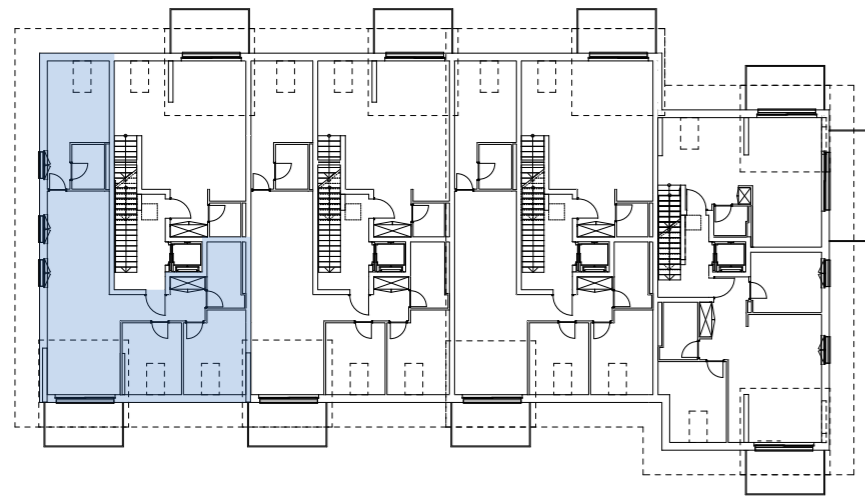
	Surface totale de vente	138.15 m²
	Surface habitable	133.2 m ²
	Surface balcon / terrasse	9.85 m ²
	Surface jardin	
	Surface cave	6.5 m ²

Pour les pièces dont le plafond suit la pente de la toiture, la surface habitable est comptée en plein à partir de 1.30 mètres selon la législation vaudoise.



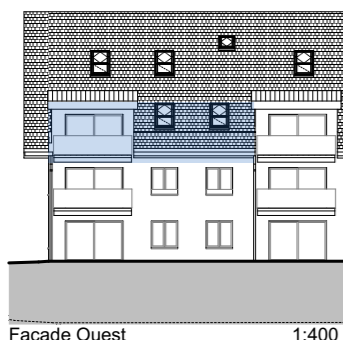
60.20 Clos des Biolles_Romanel-sur-Lausanne





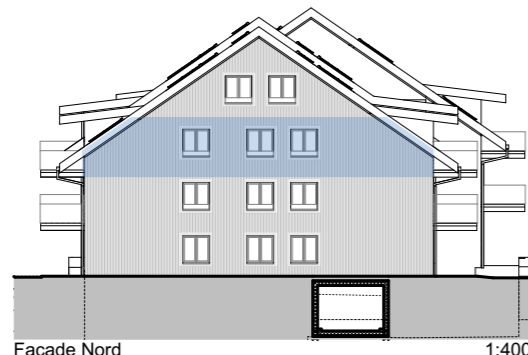
2ème Etage

1:400



Façade Ouest





1:400



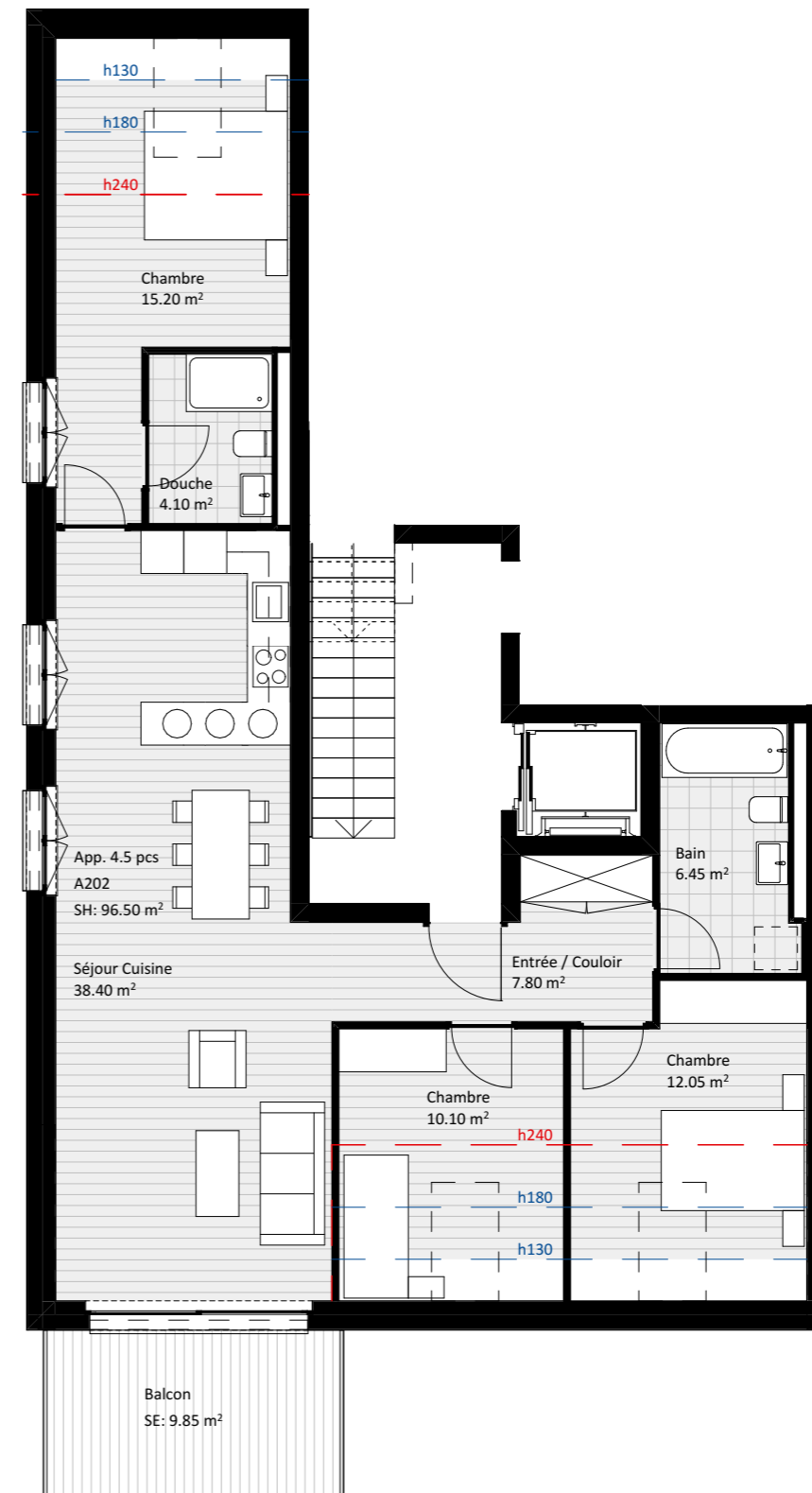
Façade Nord

1:400

A202 - 4.5 pièces

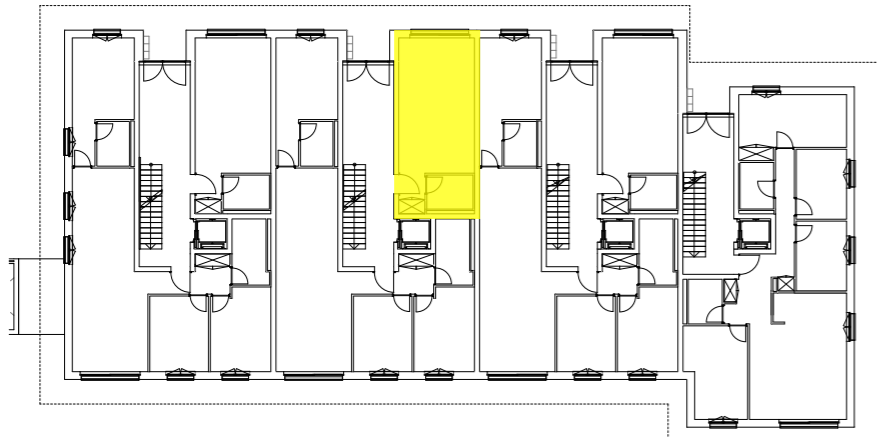
	Surface totale de vente	101.45 m ²
	Surface habitable	96.5 m ²
	Surface balcon / terrasse	9.85 m ²
	Surface jardin	
	Surface cave	6.5 m ²

Pour les pièces dont le plafond suit la pente de la toiture, la surface habitable est comptée en plein à partir de 1.30 mètres selon la législation vaudoise.



60.20 Clos des Biolles_Romanel-sur-Lausanne





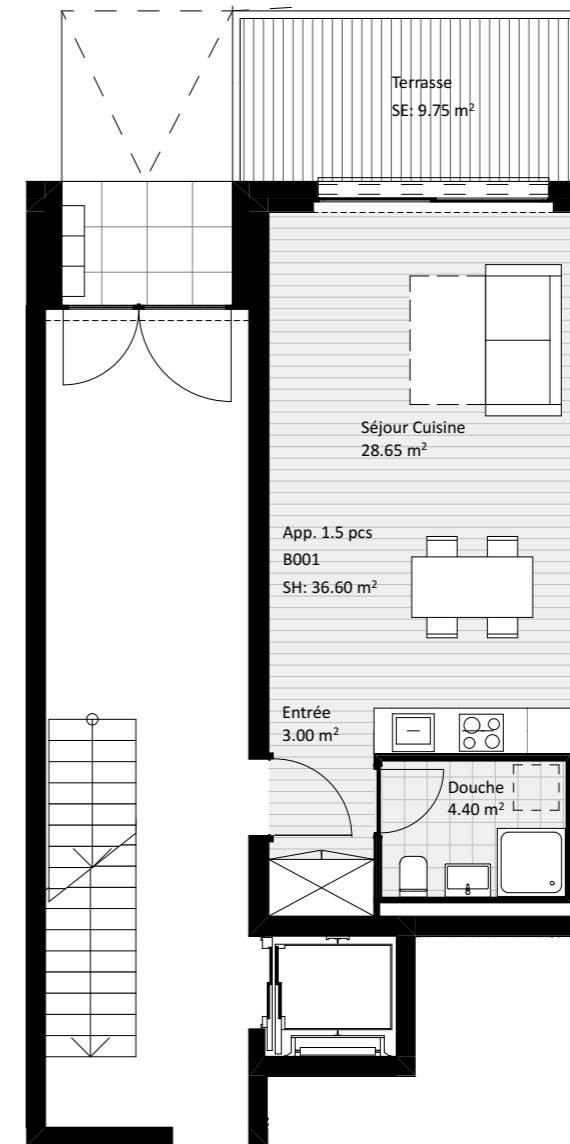
Rez-de-chaussée

1:400







Façade Est

1:400

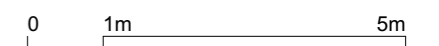


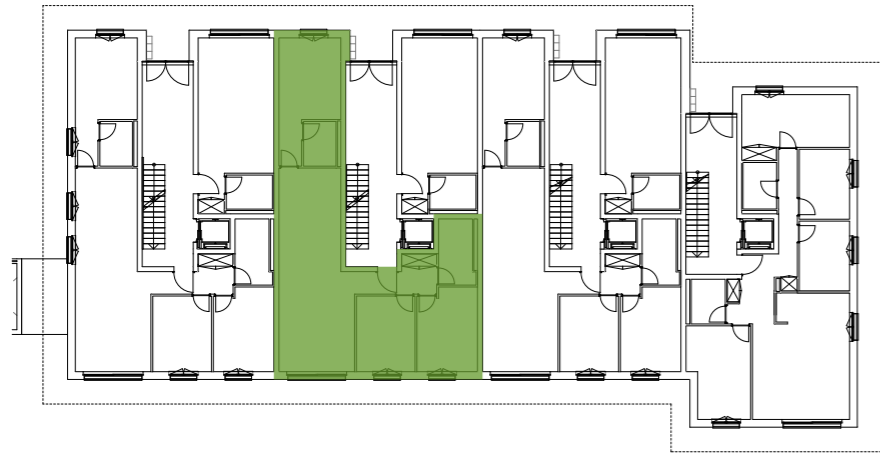
B001 - 1.5 pièces

	Surface totale de vente	41.5 m ²
	Surface habitable	36.6 m ²
	Surface balcon / terrasse	9.75 m ²
	Surface jardin	
	Surface cave	5.0 m ²

Pour les pièces dont le plafond suit la pente de la toiture, la surface habitable est comptée en plein à partir de 1.30 mètres selon la législation vaudoise.

60.20 Clos des Biolles_Romanel-sur-Lausanne





Rez-de-chaussée





1:400



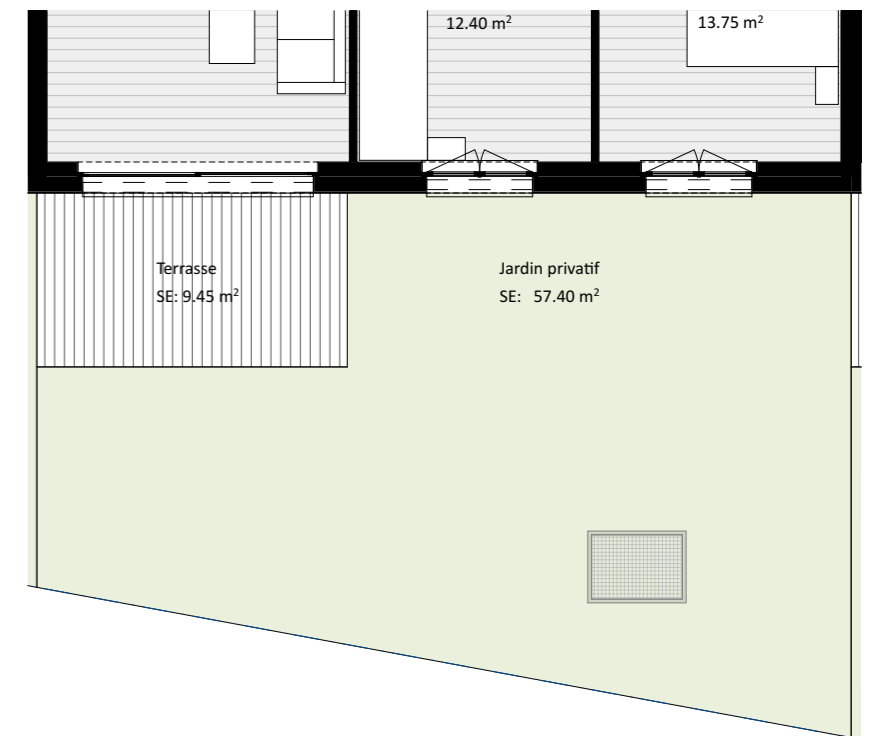
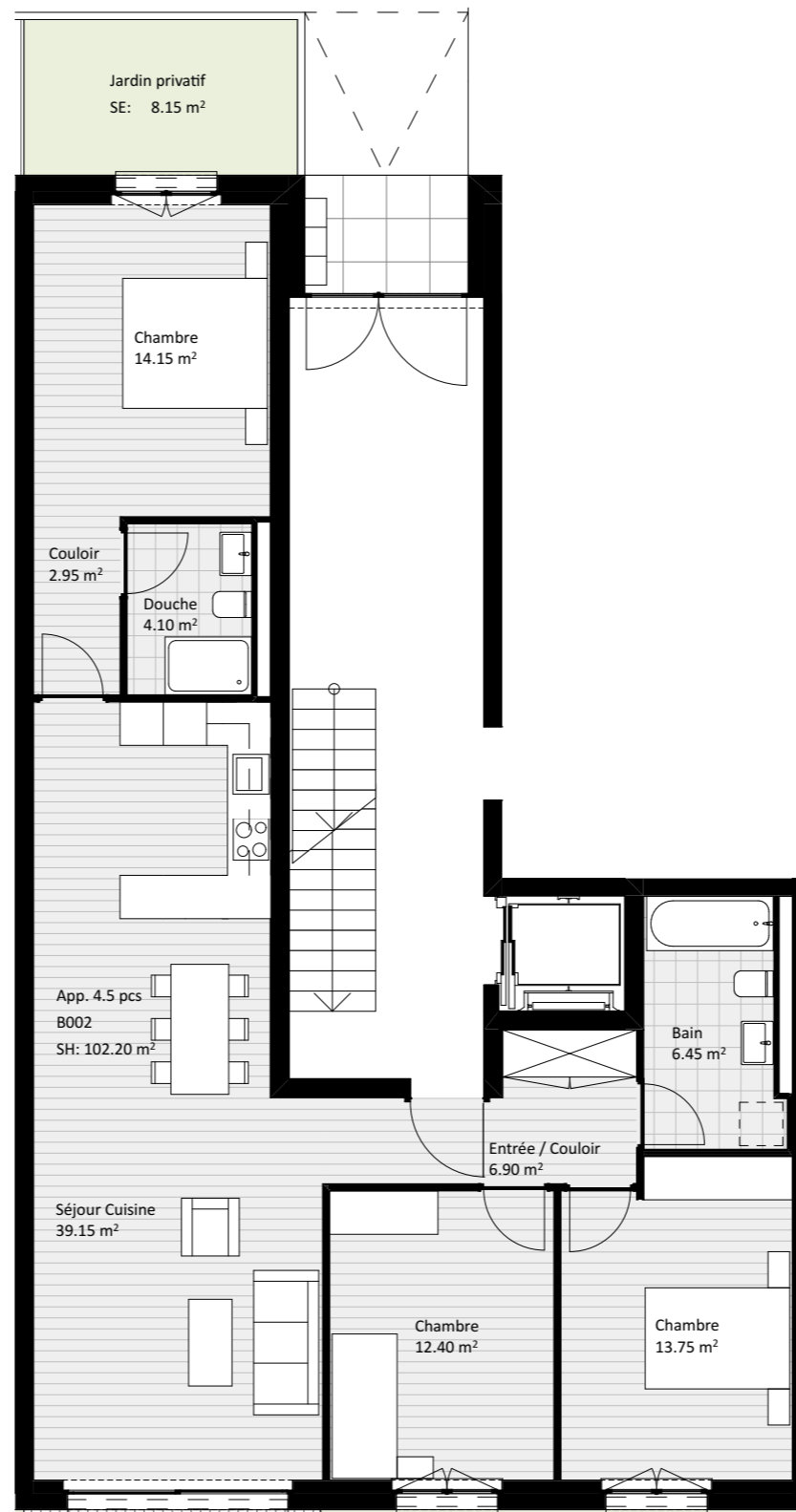
Façade Ouest

1:400

B002 - 4.5 pièces

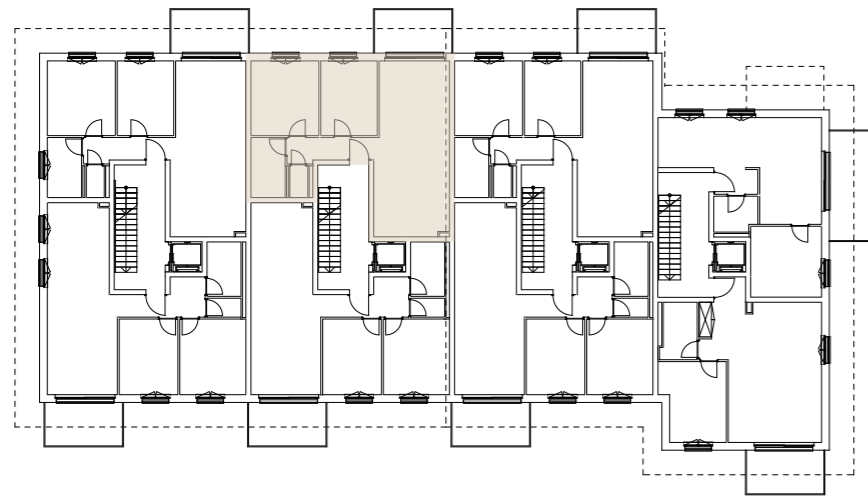
	Surface totale de vente	128.8 m ²
	Surface habitable	102.2 m ²
	Surface balcon / terrasse	9.45 m ²
	Surface jardin	65.55 m ²
	Surface cave	7.0 m ²

Pour les pièces dont le plafond suit la pente de la toiture, la surface habitable est comptée en plein à partir de 1.30 mètres selon la législation vaudoise.



60.20 Clos des Biolles_Romanel-sur-Lausanne





1er Etage

1:400







Façade Est

1:400

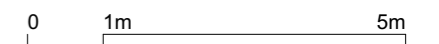


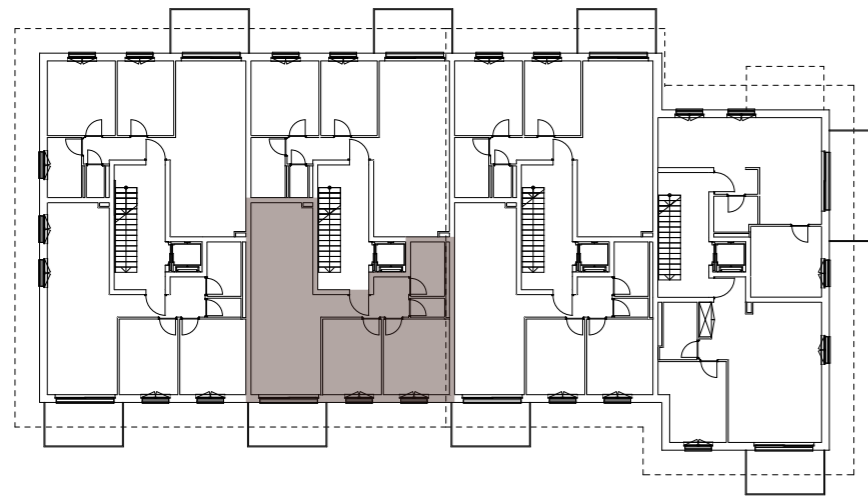
B101 - 3.5 pièces

	Surface totale de vente	81.7 m ²
	Surface habitable	76.75 m ²
	Surface balcon / terrasse	9.85 m ²
	Surface jardin	
	Surface cave	6.0 m ²

Pour les pièces dont le plafond suit la pente de la toiture, la surface habitable est comptée en plein à partir de 1.30 mètres selon la législation vaudoise.

60.20 Clos des Biolles_Romanel-sur-Lausanne





1er Etage





1:400



Façade Ouest

1:400

B102 - 3.5 pièces

	Surface totale de vente	82.8 m ²
	Surface habitable	77.85 m ²
	Surface balcon / terrasse	9.85 m ²
	Surface jardin	
	Surface cave	9.0 m ²

Pour les pièces dont le plafond suit la pente de la toiture, la surface habitable est comptée en plein à partir de 1.30 mètres selon la législation vaudoise.

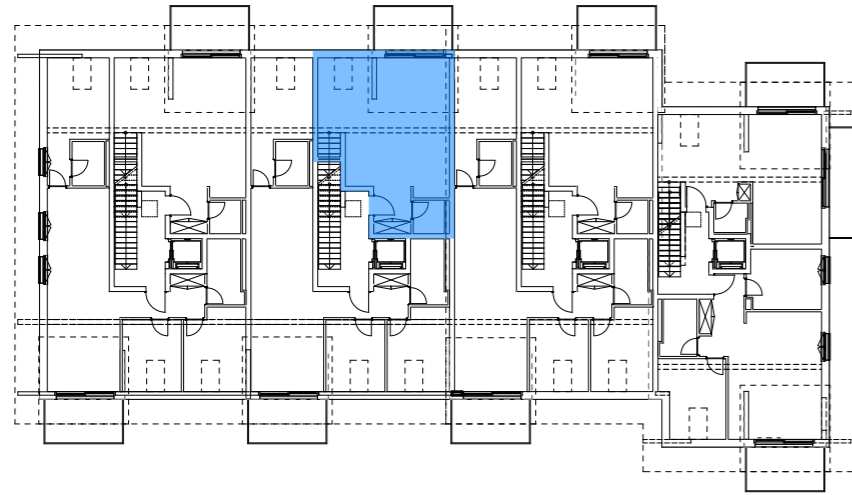


60.20 Clos des Biolles_Romanel-sur-Lausanne





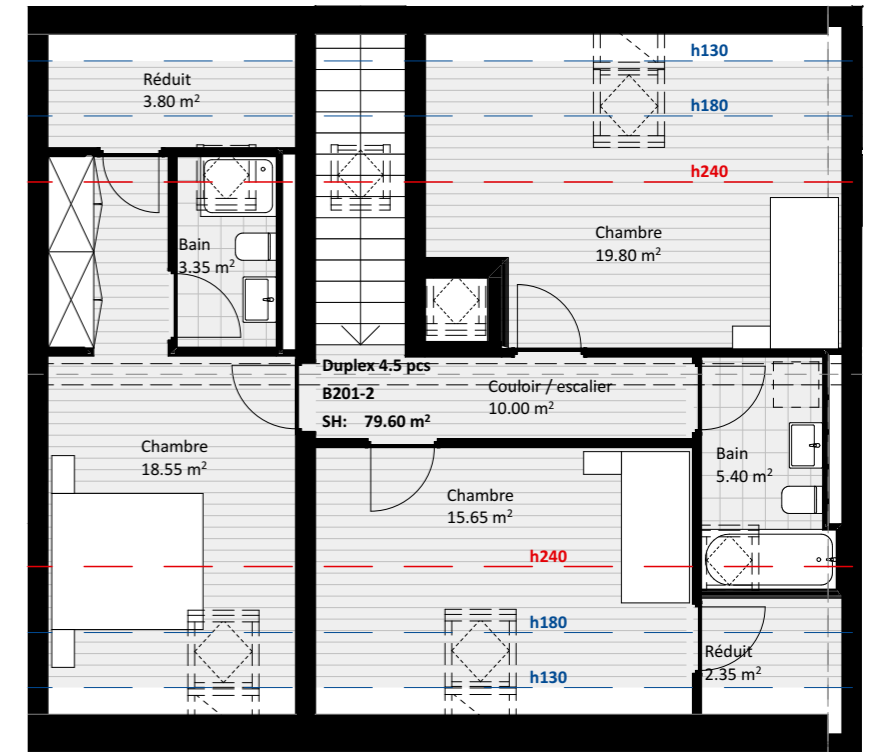
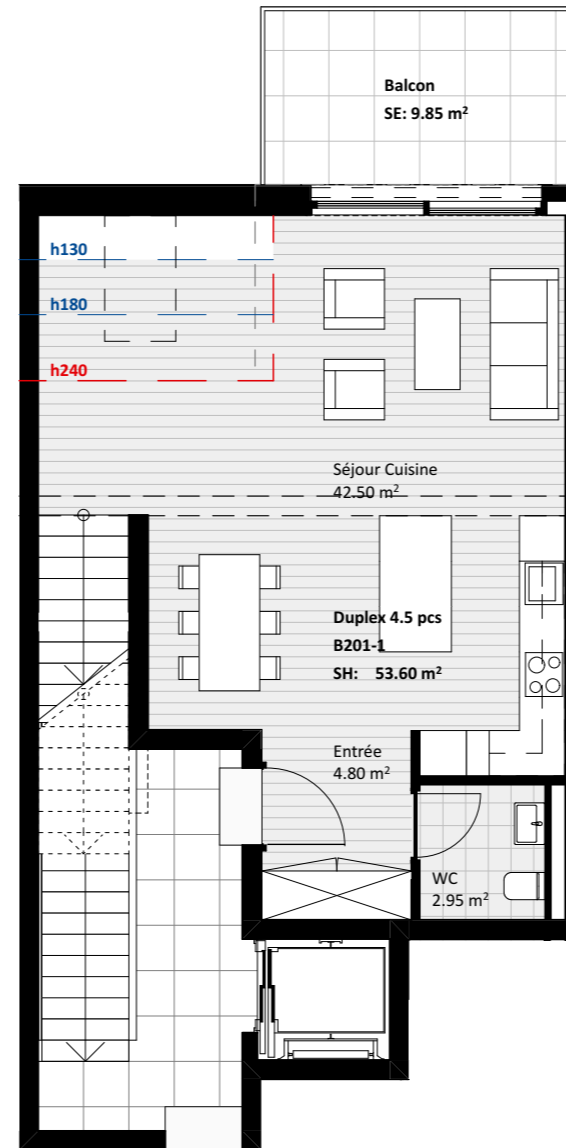
Combles 1:400





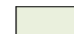

2ème Etage 1:400



Façade Est 1:400



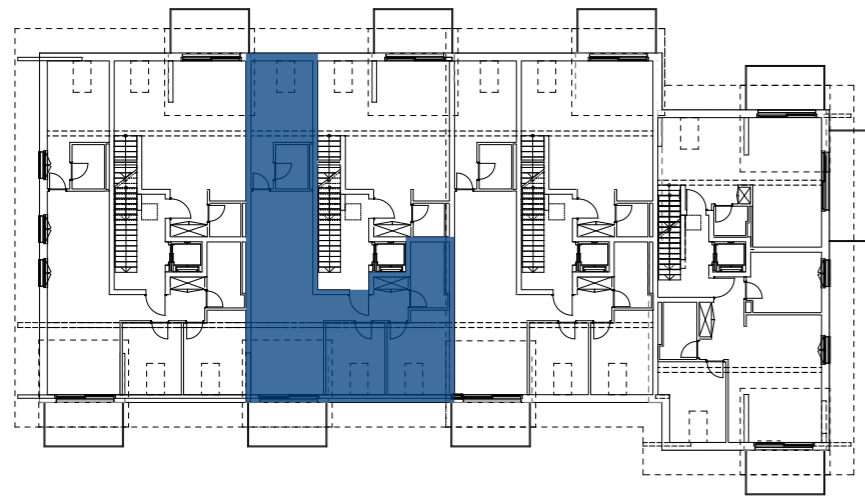
B201 - Duplex 4.5 pièces

	Surface totale de vente	138.15 m²
	Surface habitable	133.2 m ²
	Surface balcon / terrasse	9.85 m ²
	Surface jardin	
	Surface cave	8.5 m ²

Pour les pièces dont le plafond suit la pente de la toiture, la surface habitable est comptée en plein à partir de 1.30 mètres selon la législation vaudoise.

60.20 Clos des Biolles_Romanel-sur-Lausanne





2ème Etage





1:400



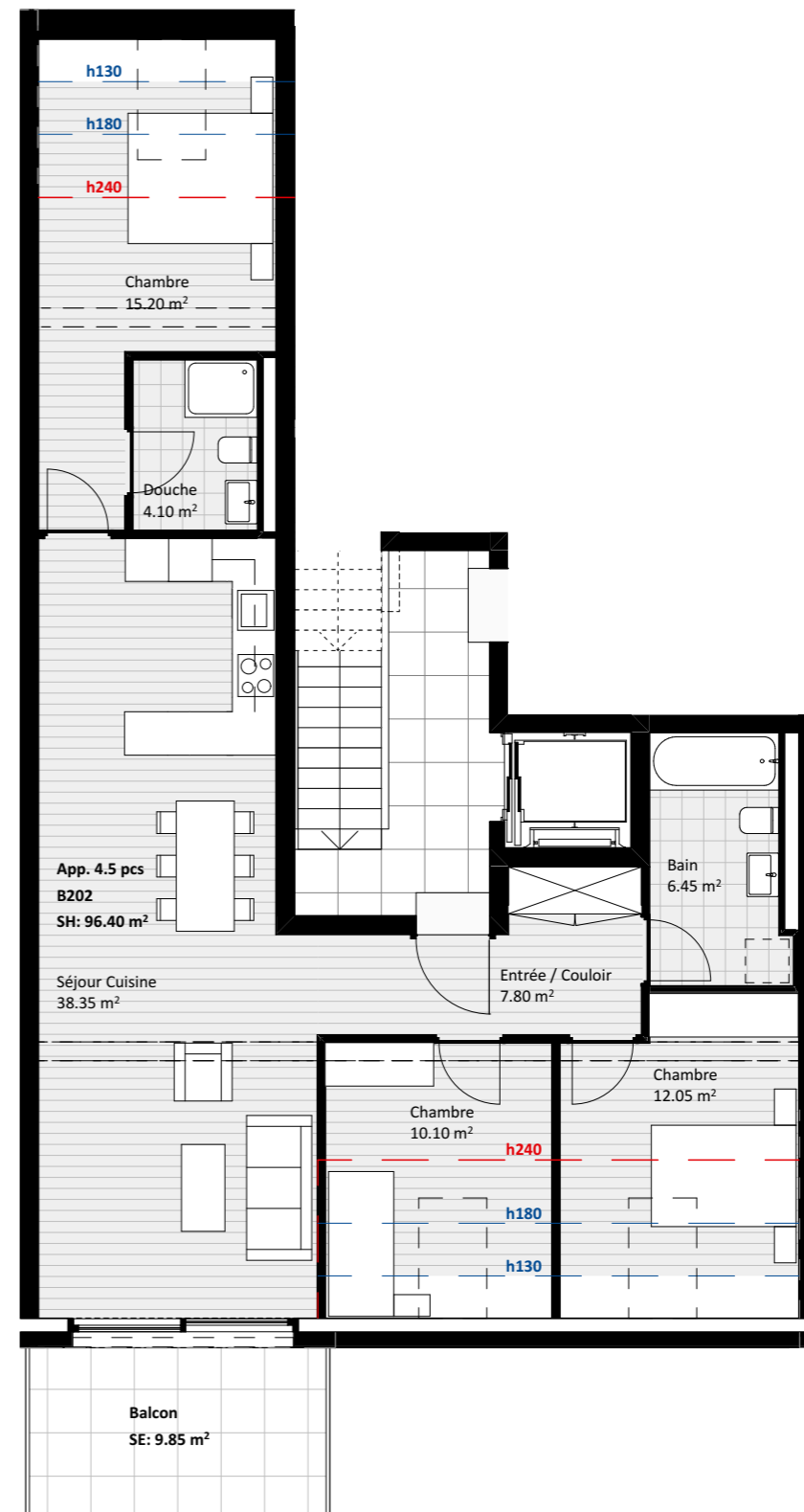
Façade Ouest

1:400

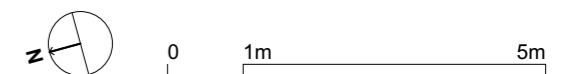
B202 - 4.5 pièces

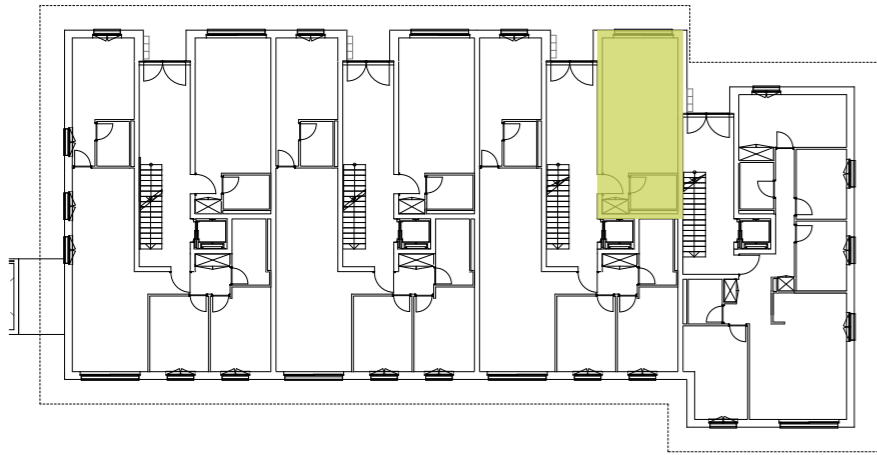
	Surface totale de vente	101.35 m²
	Surface habitable	96.4 m ²
	Surface balcon / terrasse	9.85 m ²
	Surface jardin	
	Surface cave	5.5 m ²

Pour les pièces dont le plafond suit la pente de la toiture, la surface habitable est comptée en plein à partir de 1.30 mètres selon la législation vaudoise.



60.20 Clos des Biolles_Romanel-sur-Lausanne





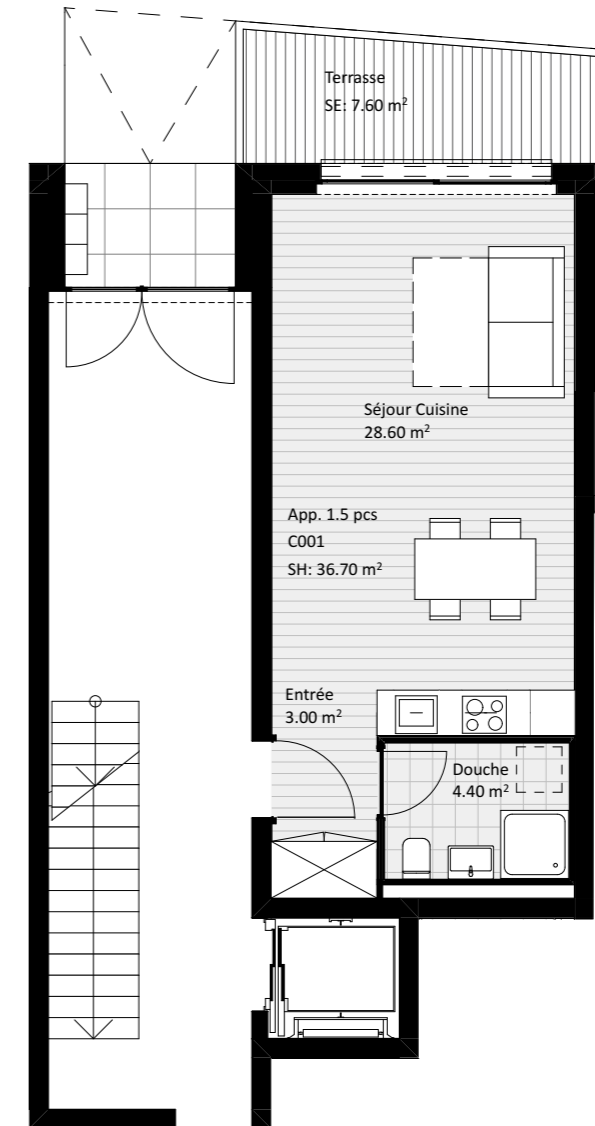
Rez-de-chaussée

1:400







Façade Est

1:400

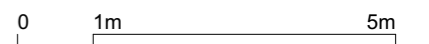


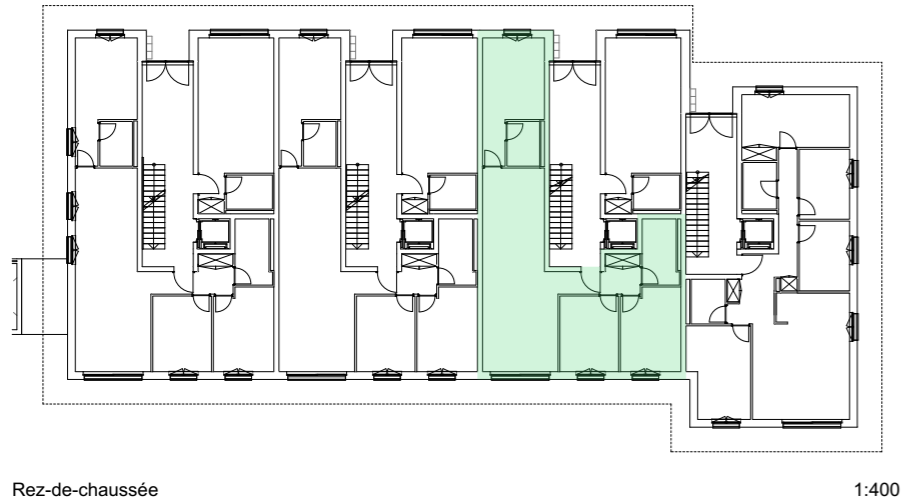
C001 - 1.5 pièces

	Surface totale de vente	40.5 m ²
	Surface habitable	36.7 m ²
	Surface balcon / terrasse	7.6 m ²
	Surface jardin	
	Surface cave	4.0 m ²

Pour les pièces dont le plafond suit la pente de la toiture, la surface habitable est comptée en plein à partir de 1.30 mètres selon la législation vaudoise.

60.20 Clos des Biolles_Romanel-sur-Lausanne





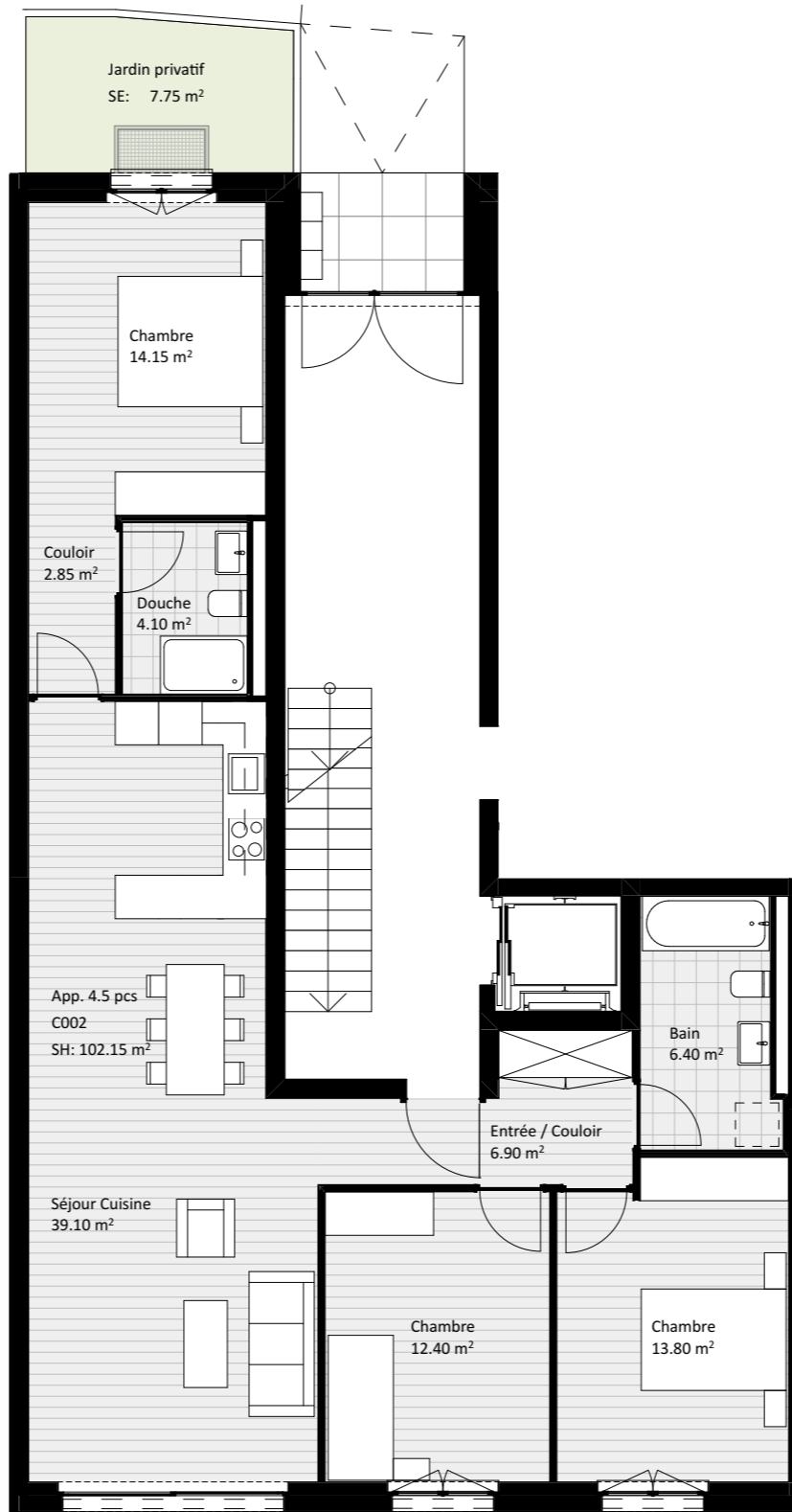
Rez-de-chaussée

1:400







Façade Ouest

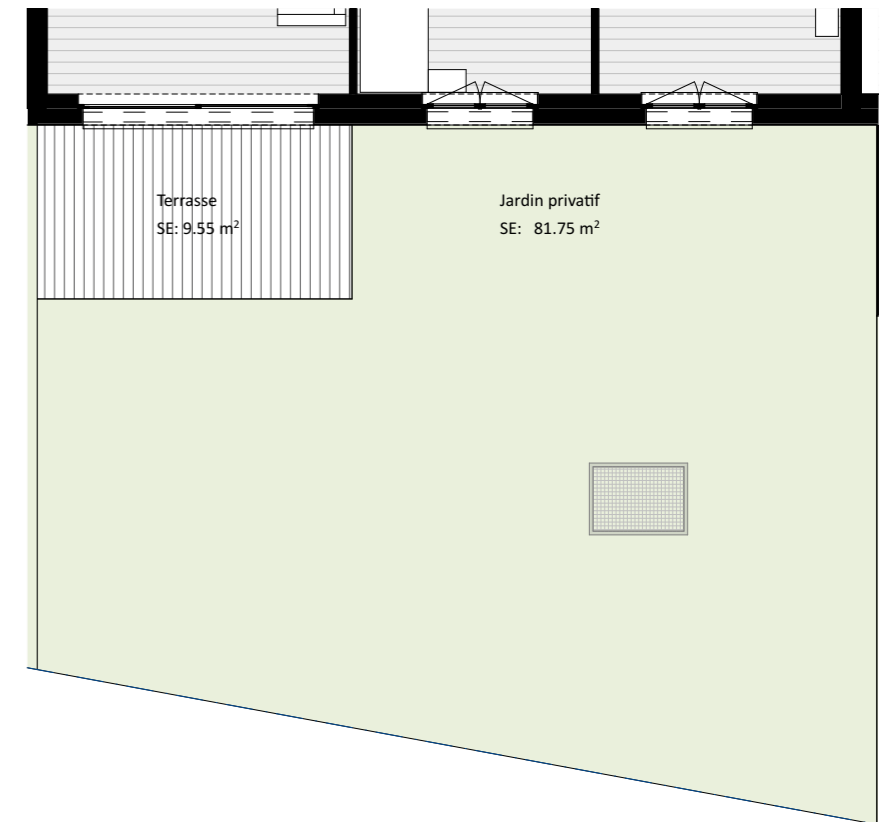
1:400



C002 - 4.5 pièces

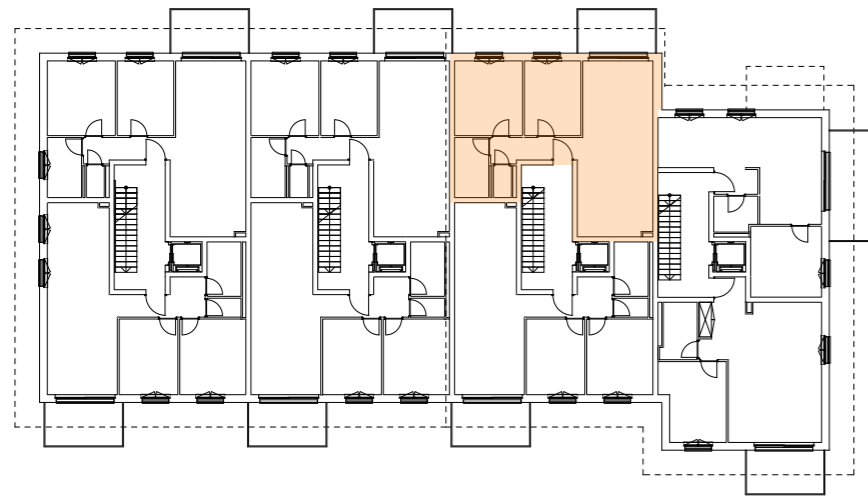
	Surface totale de vente	136.75 m ²
	Surface habitable	102.15 m ²
	Surface balcon / terrasse	9.55 m ²
	Surface jardin	89.5 m ²
	Surface cave	9.0 m ²

Pour les pièces dont le plafond suit la pente de la toiture, la surface habitable est comptée en plein à partir de 1.30 mètres selon la législation vaudoise.



60.20 Clos des Biolles_Romanel-sur-Lausanne





1er Etage

1:400







Façade Est

1:400

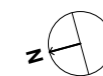


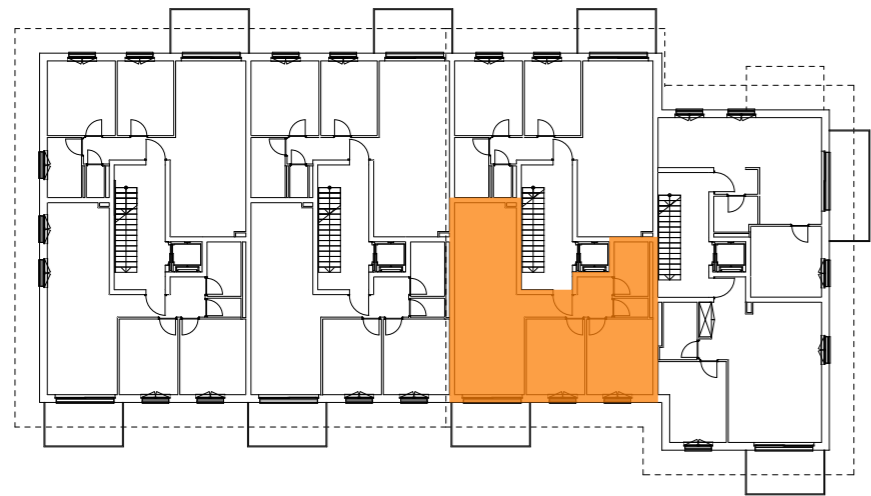
C101 - 3.5 pièces

	Surface totale de vente	81.65 m ²
	Surface habitable	76.7 m ²
	Surface balcon / terrasse	9.85 m ²
	Surface jardin	
	Surface cave	4.0 m ²

Pour les pièces dont le plafond suit la pente de la toiture, la surface habitable est comptée en plein à partir de 1.30 mètres selon la législation vaudoise.

60.20 Clos des Biolles_Romanel-sur-Lausanne





1er Etage





1:400



Façade Ouest

1:400

C102 - 3.5 pièces

	Surface totale de vente	82.8 m ²
	Surface habitable	77.85 m ²
	Surface balcon / terrasse	9.85 m ²
	Surface jardin	
	Surface cave	5.5 m ²

Pour les pièces dont le plafond suit la pente de la toiture, la surface habitable est comptée en plein à partir de 1.30 mètres selon la législation vaudoise.



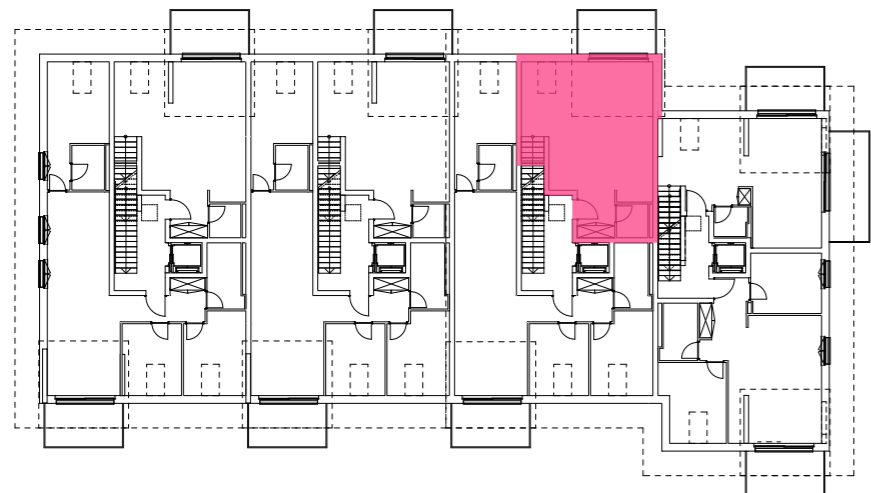
60.20 Clos des Biolles_Romanel-sur-Lausanne





Combles

1:400



2ème Etage



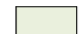

1:400



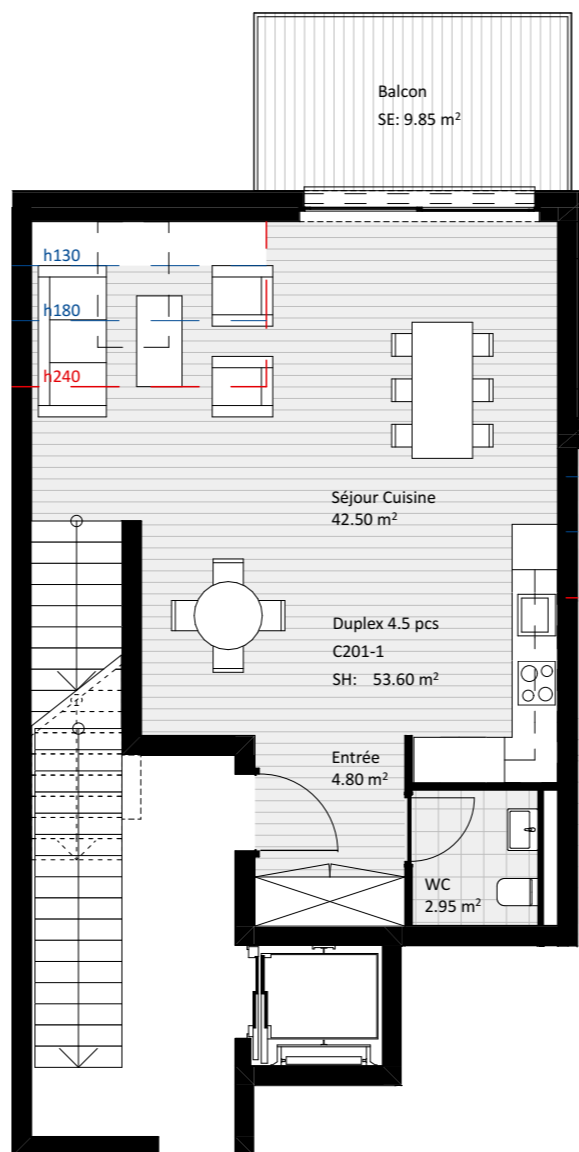
Façade Est

1:400

C201 - Duplex 4.5 pièces

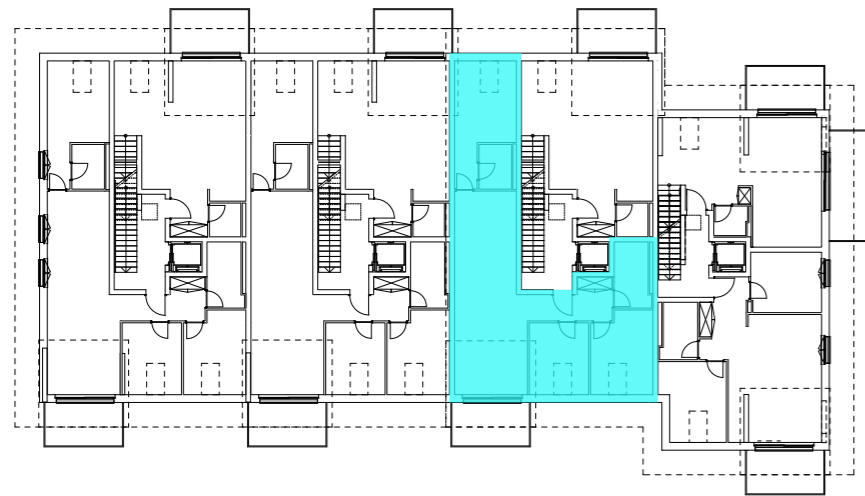
	Surface totale de vente	138.10 m ²
	Surface habitable	133.20 m ²
	Surface balcon / terrasse	9.85 m ²
	Surface jardin	
	Surface cave	6.0 m ²

Pour les pièces dont le plafond suit la pente de la toiture, la surface habitable est comptée en plein à partir de 1.30 mètres selon la législation vaudoise.



60.20 Clos des Biolles_Romanel-sur-Lausanne





2ème Etage





1:400



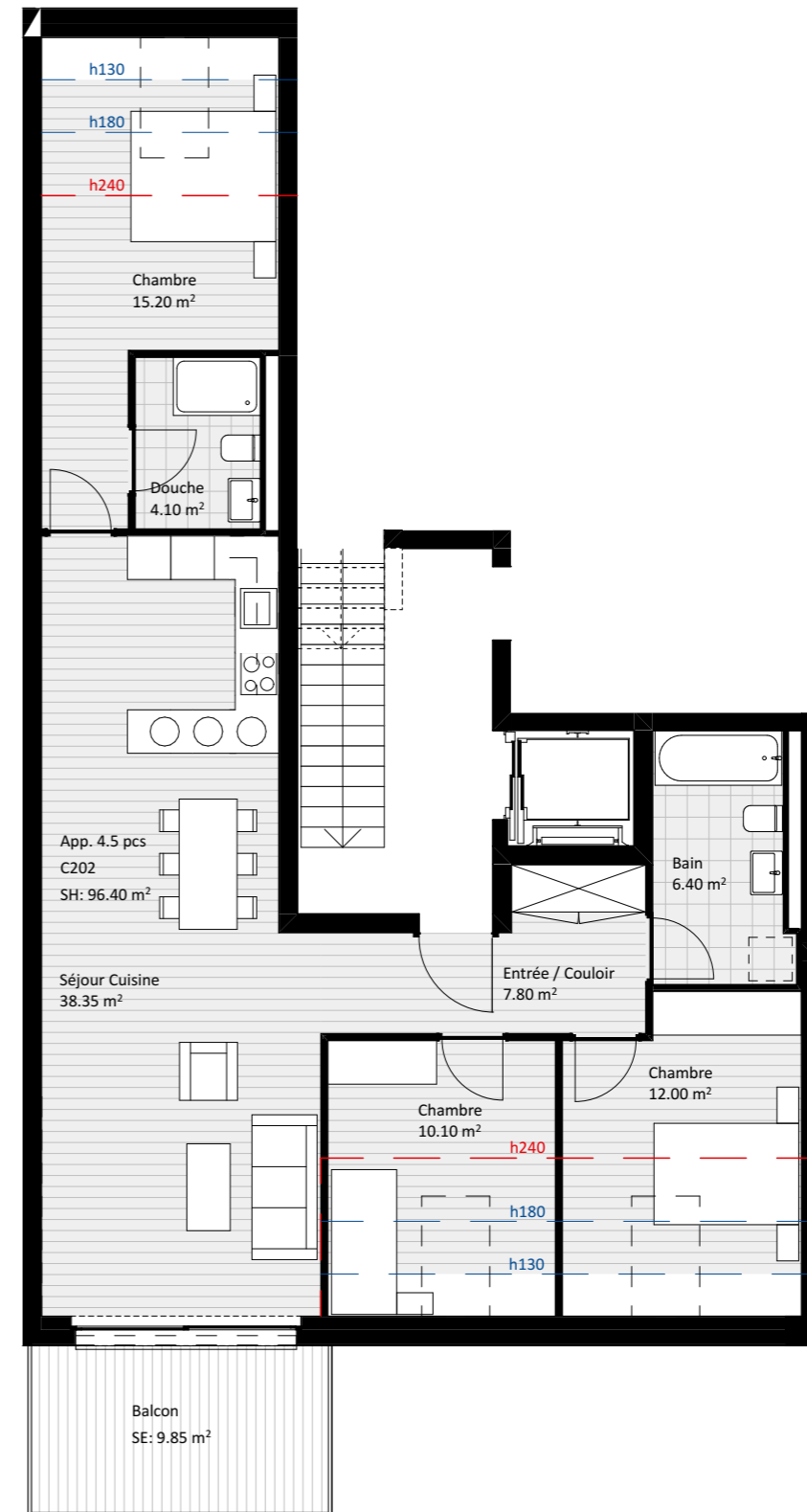
Façade Ouest

1:400

C202 - 4.5 pièces

	Surface totale de vente	101.35 m ²
	Surface habitable	96.4 m ²
	Surface balcon / terrasse	9.85 m ²
	Surface jardin	
	Surface cave	6.5 m ²

Pour les pièces dont le plafond suit la pente de la toiture, la surface habitable est comptée en plein à partir de 1.30 mètres selon la législation vaudoise.

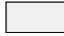





60.20 Clos des Biolles_Romanel-sur-Lausanne

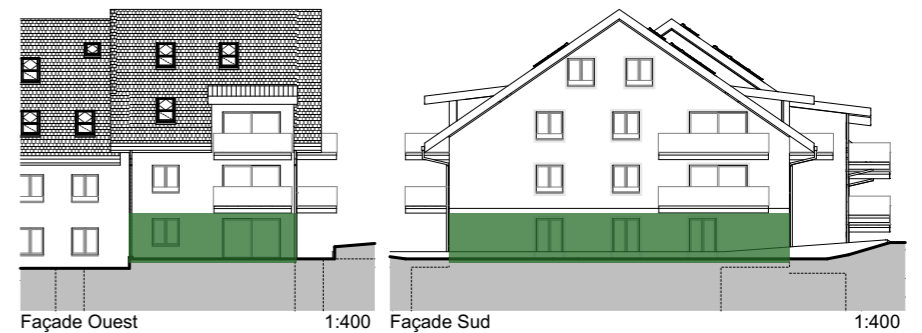
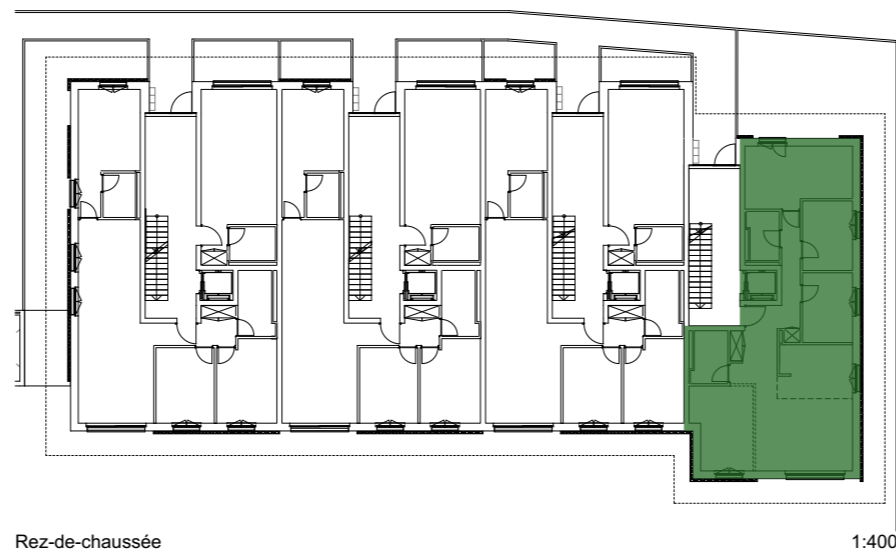




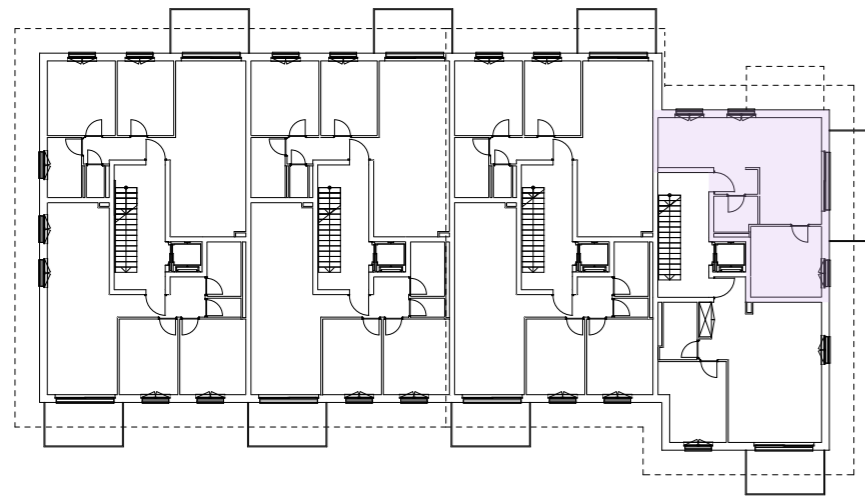
D001 - 4.5 pièces

	Surface totale de vente	154.50 m²
	Surface habitable	113.50 m ²
	Surface balcon / terrasse	24.05 m ²
	Surface jardin	142.55 m ²
	Surface cave	7.5 m ²

Pour les pièces dont le plafond suit la pente de la toiture, la surface habitable est comptée en plein à partir de 1.30 mètres selon la législation vaudoise.



60.20 Clos des Biolles_Romanel-sur-Lausanne



1er Etage

1:400



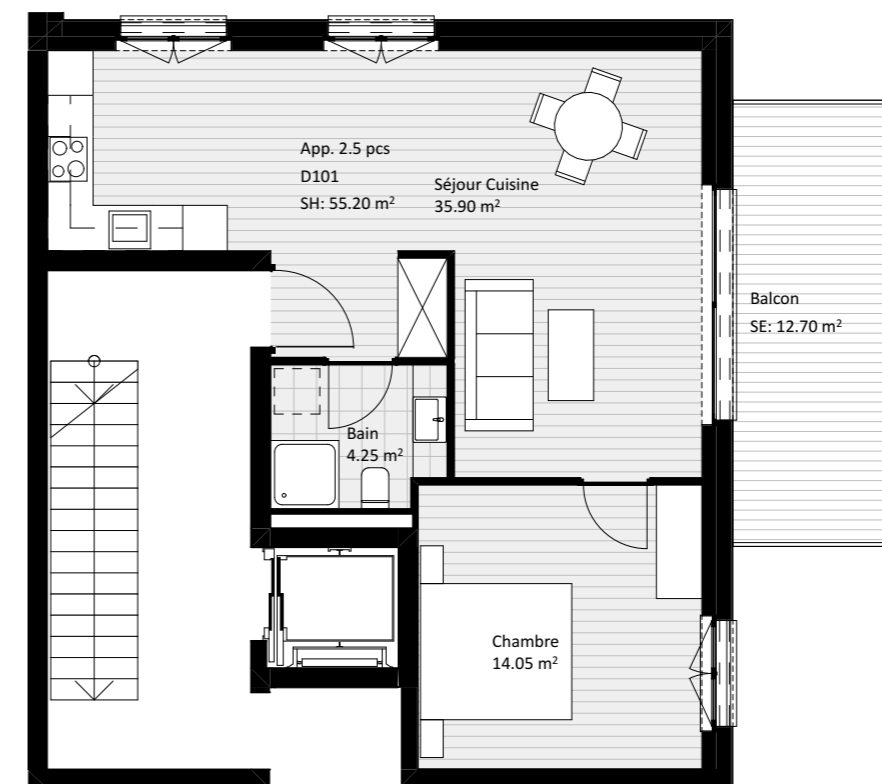
Façade Sud

1:400







Façade Est

1:400



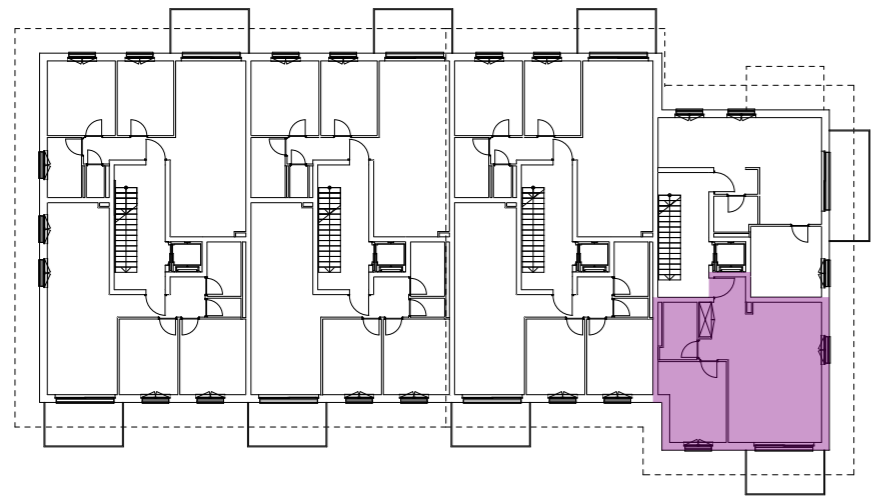
D101 - 2.5 pièces

	Surface totale de vente	61.55 m ²
	Surface habitable	55.2 m ²
	Surface balcon / terrasse	12.7 m ²
	Surface jardin	
	Surface cave	7.5 m ²

Pour les pièces dont le plafond suit la pente de la toiture, la surface habitable est comptée en plein à partir de 1.30 mètres selon la législation vaudoise.

60.20 Clos des Biolles_Romanel-sur-Lausanne





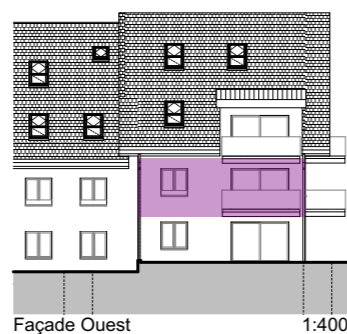
1er Etage

1:400



Façade Sud





1:400



Façade Ouest

1:400

D102 - 2.5 pièces

	Surface totale de vente	68.85 m ²
	Surface habitable	63.9 m ²
	Surface balcon / terrasse	9.9 m ²
	Surface jardin	
	Surface cave	8.0 m ²

Pour les pièces dont le plafond suit la pente de la toiture, la surface habitable est comptée en plein à partir de 1.30 mètres selon la législation vaudoise.



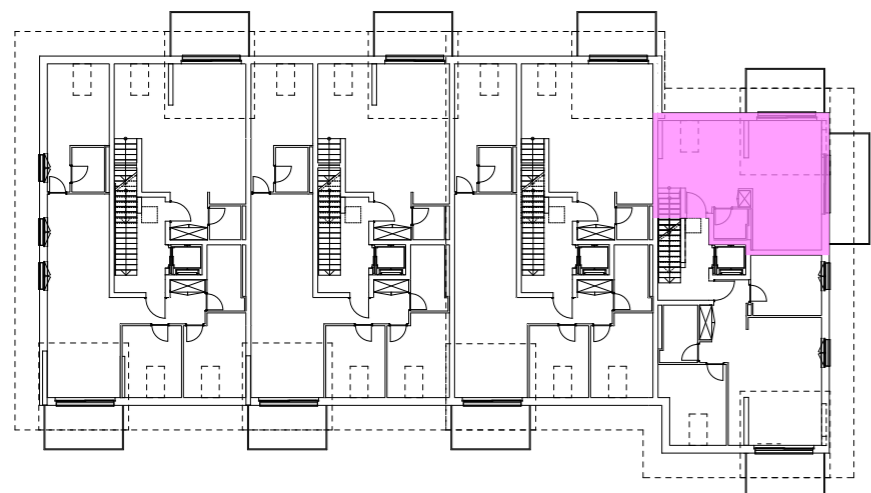
60.20 Clos des Biolles_Romanel-sur-Lausanne





Combles

1:400



2ème Etage

1:400



Façade Sud

1:400



Façade Est

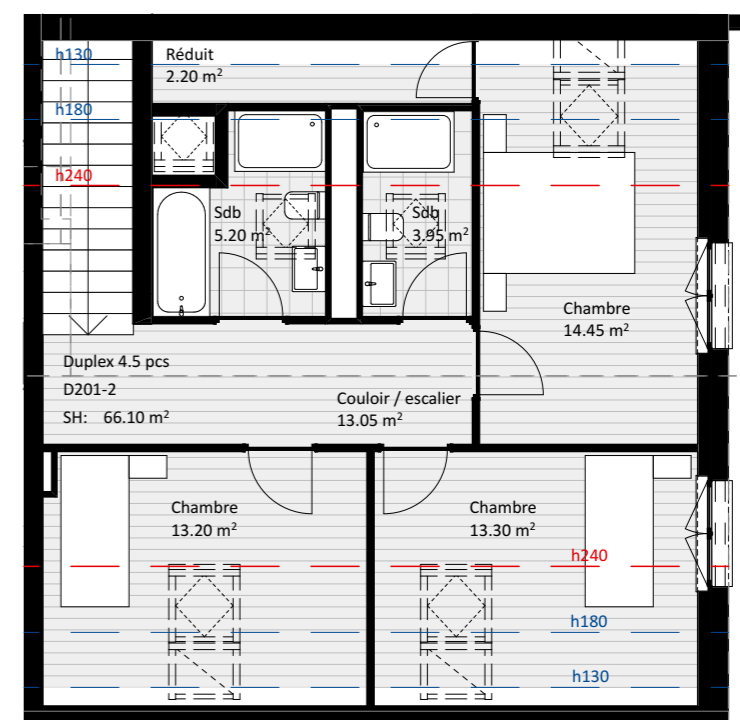
1:400



D201 - Duplex 4.5 pièces

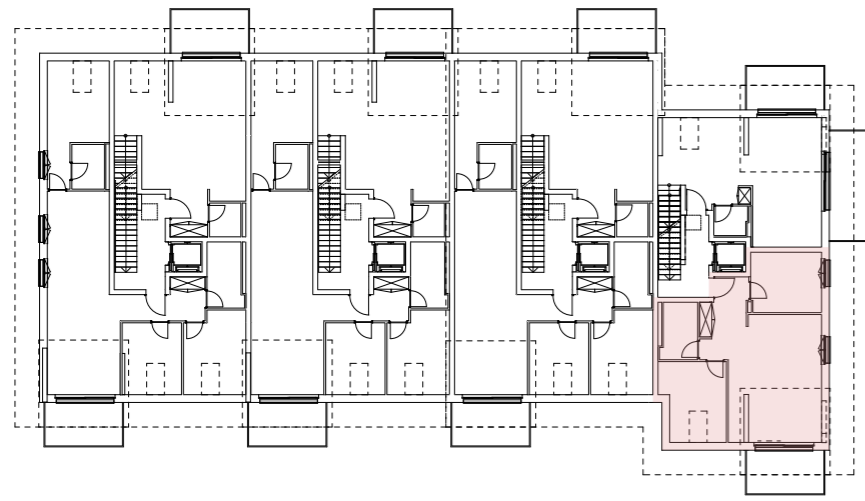
Surface totale de vente	128.15 m ²
Surface habitable	116.85 m ²
Surface balcon / terrasse	22.55 m ²
Surface jardin	
Surface cave	8.0 m ²

Pour les pièces dont le plafond suit la pente de la toiture, la surface habitable est comptée en plein à partir de 1.30 mètres selon la législation vaudoise.



60.20 Clos des Biolles_Romanel-sur-Lausanne





2ème Etage

1:400



Façade Sud





1:400



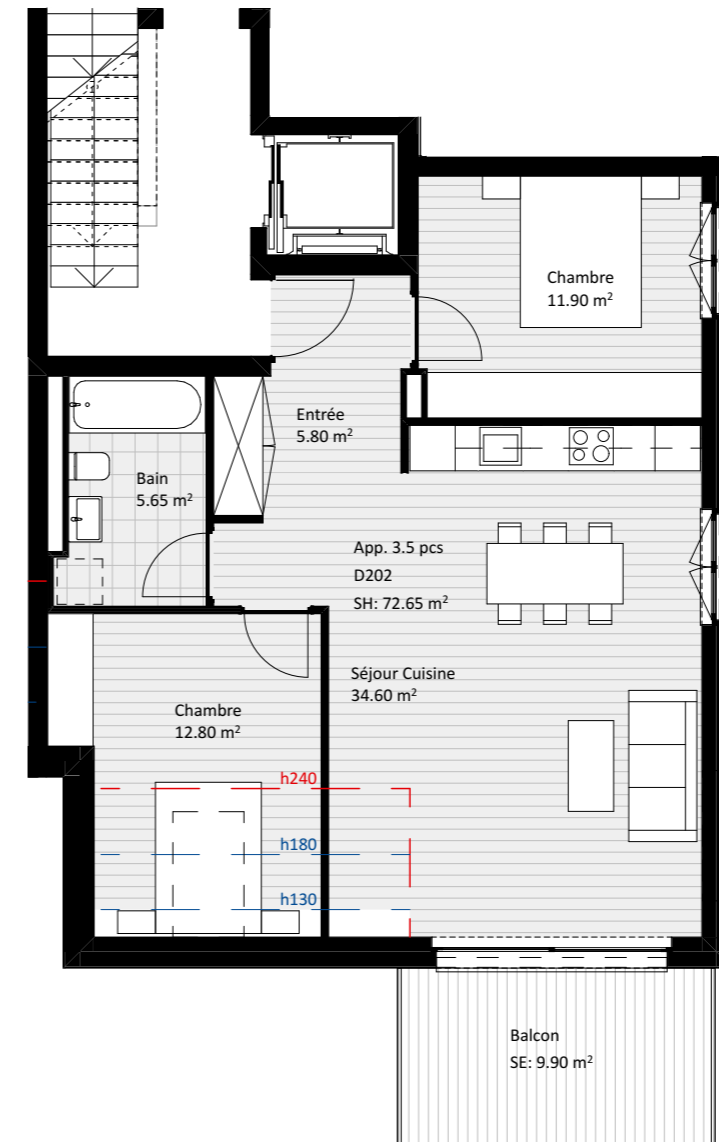
Façade Ouest

1:400

D202 - 3.5 pièces

	Surface totale de vente	77.65 m ²
	Surface habitable	72.65 m ²
	Surface balcon / terrasse	10.0 m ²
	Surface jardin	
	Surface cave	6.5 m ²

Pour les pièces dont le plafond suit la pente de la toiture, la surface habitable est comptée en plein à partir de 1.30 mètres selon la législation vaudoise.



60.20 Clos des Biolles_Romanel-sur-Lausanne

